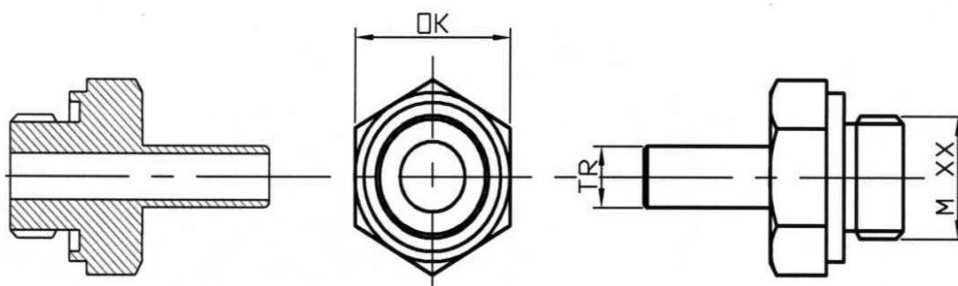


Straight stem connector

for pneumatic systems of truck accessories

Specification



This connector is manufactured in sizes **6/ 8/10/12/15 mm**. It is designed to be used as a counterpart to clam connectors with the John Guest Cartridge System .Design of this part conforms to European standards including DIN 73378. The body is made out of brass.



Table of sizes :

Designation	TR-Tube OD [mm]	Wrench [mm]	Thread [mm]	Max. process pressure [MPa] -20 °C / +20 °C
P-M10 x 1,0 TR 6	6	17	M10x1,0	1,6
P-M12 x 1,5 TR 6	6	19	M12x1,5	1,6
P-M12 x 1,5 TR 8	8	19	M12x1,5	1,6
P-M16 x 1,5 TR 6	6	22	M16x1,5	1,6
P-M16 x 1,5 TR 8	8	22	M16x1,5	1,6
P-M16 x 1,5 TR 10	10	22	M16x1,5	1
P-M16 x 1,5 TR 12	12	22	M16x1,5	1
P-M22 x 1,5 TR 6	6	27	M22x1,5	1,6
P-M22 x 1,5 TR 8	8	27	M22x1,5	1,6
P-M22 x 1,5 TR 10	10	27	M22x1,5	1
P-M22 x 1,5 TR 12	12	27	M22x1,5	1
P-M22 x 1,5 TR 15	15	27	M22x1,5	1

- **1 MPa** → max. process pressure at 65 °C